

Notes

Callaway County

Osage County

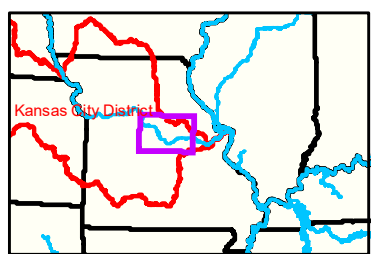
Gage_U

Gage_L

Jefferson City Gage = 11.53 at time of collection 6 April 2021

132

131



LEGEND

	< 8		< 8 ft		Green Passing
	8 - 9		8 - 9 ft		Red Passing
	9 - 9.5		9 - 10 ft		Green Crossing
	9.5 - 10		10 - 12 ft		Red Crossing
	10 - 12		River Mile		
	12 - 14		Sailing Line		
	14 - 16		BSNP Structure		
	> 16		Levee		

Buoy

	Green		AIS Green CAN
	Red		AIS Red NUN
	Green		Green CAN
	Red		Red NUN
	Junction		

Scale: 0 312.5 625 937.5 1,250 2,500 Feet



NOTES:
 Horizontal Coordinate System:
 World Geodetic System of 1984 (WGS84), projected to the Universal Transverse Mercator (UTM) Zone 15 North. Distance units in U.S. Survey Feet

Vertical Datum:
 Soundings are shown in feet and indicated depths are referenced to water surface at time of collection.

The information depicted on this map represents the results of a survey conducted on the date indicated and can only be considered to represent the general condition existing at that time.

The location of navigation aids are based on and provided by the U.S. Coast Guard.



DISCLAIMER: The U.S. Army Corps of Engineers (USACE) provides this information for informational purposes only. It is not intended for use in any legal proceeding or for any other purpose. The USACE makes no warranty, express or implied, regarding the accuracy, completeness, or reliability of the information. The user assumes all liability for any use of this information. The USACE is not responsible for any errors or omissions in this information. The USACE is not responsible for any damages, including consequential damages, arising from the use of this information. The USACE is not responsible for any loss of data or information. The USACE is not responsible for any loss of profit or business. The USACE is not responsible for any loss of income or revenue. The USACE is not responsible for any loss of reputation or credit. The USACE is not responsible for any loss of honor or respect. The USACE is not responsible for any loss of dignity or self-respect. The USACE is not responsible for any loss of peace of mind or tranquility. The USACE is not responsible for any loss of sleep or rest. The USACE is not responsible for any loss of health or vitality. The USACE is not responsible for any loss of life or limb. The USACE is not responsible for any loss of property or possessions. The USACE is not responsible for any loss of freedom or liberty. The USACE is not responsible for any loss of happiness or well-being. The USACE is not responsible for any loss of joy or pleasure. The USACE is not responsible for any loss of love or affection. The USACE is not responsible for any loss of friendship or companionship. The USACE is not responsible for any loss of family or community. The USACE is not responsible for any loss of culture or heritage. The USACE is not responsible for any loss of identity or individuality. The USACE is not responsible for any loss of self or soul. The USACE is not responsible for any loss of heaven or paradise. The USACE is not responsible for any loss of eternal life or salvation. The USACE is not responsible for any loss of God or the Holy Spirit. The USACE is not responsible for any loss of the Kingdom of Heaven. The USACE is not responsible for any loss of the New Jerusalem. The USACE is not responsible for any loss of the Holy City. The USACE is not responsible for any loss of the Holy Land. The USACE is not responsible for any loss of the Holy Sepulchre. The USACE is not responsible for any loss of the Holy Places. The USACE is not responsible for any loss of the Holy Sites. The USACE is not responsible for any loss of the Holy Shrines. The USACE is not responsible for any loss of the Holy Temples. The USACE is not responsible for any loss of the Holy Churches. The USACE is not responsible for any loss of the Holy Mosques. The USACE is not responsible for any loss of the Holy Synagogues. The USACE is not responsible for any loss of the Holy Temples. The USACE is not responsible for any loss of the Holy Churches. The USACE is not responsible for any loss of the Holy Mosques. The USACE is not responsible for any loss of the Holy Synagogues. The USACE is not responsible for any loss of the Holy Temples. The USACE is not responsible for any loss of the Holy Churches. The USACE is not responsible for any loss of the Holy Mosques. The USACE is not responsible for any loss of the Holy Synagogues.

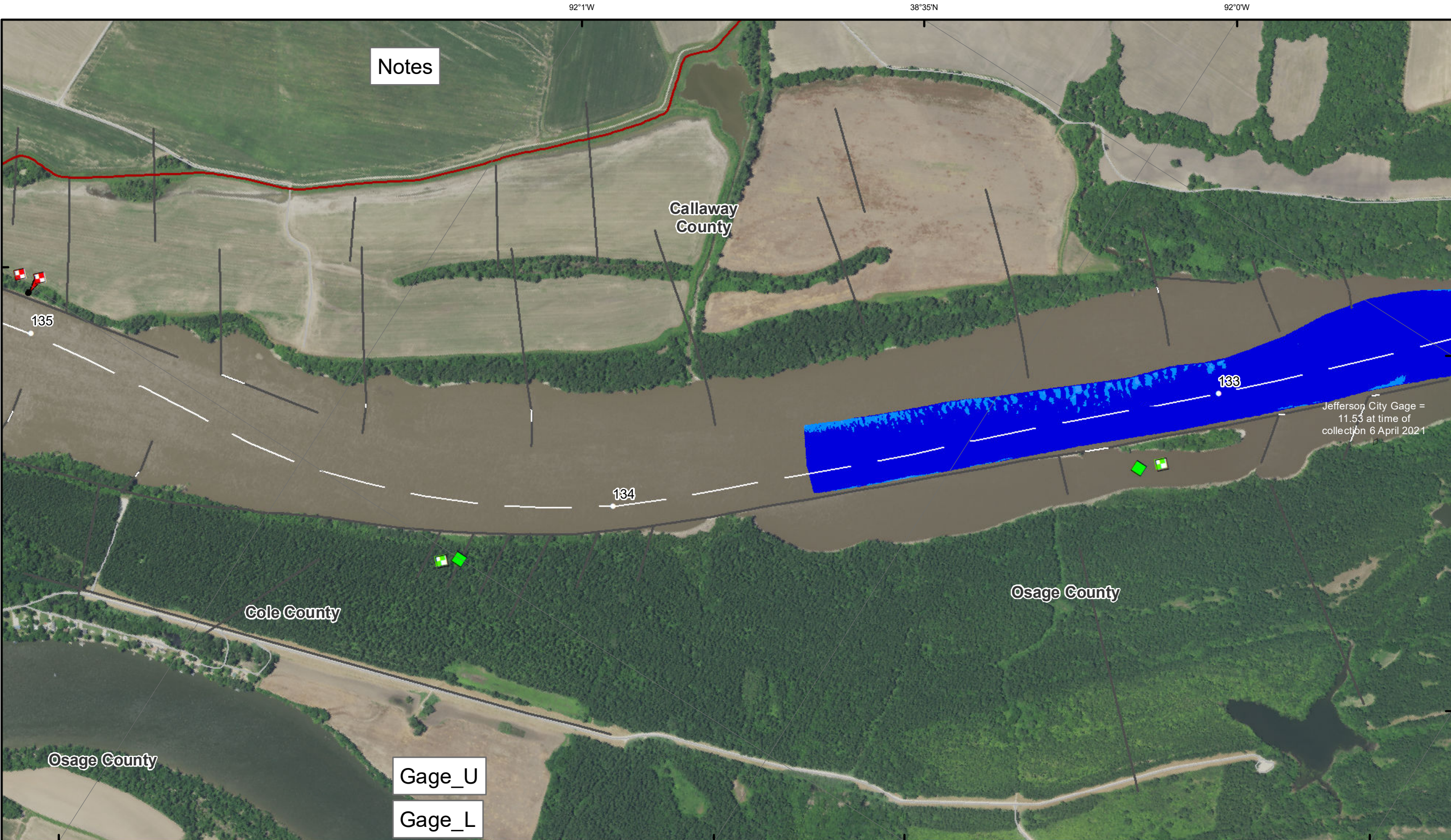
KANSAS CITY DISTRICT MISSOURI RIVER AREA OFFICE

Submitted By:	MIRA/O
Reviewed By:	MIRA/O
Checked By:	MIRA/O

Survey Information

MO_02_LMR
 MO_02_LMR_20210406_CS_132_0_133_6_SORT
 06 April 2021

Sheet Number 15 of 46



Notes

Callaway County

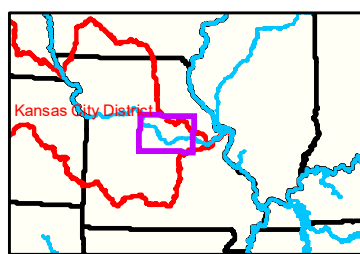
Cole County

Osage County

Gage_U

Gage_L

Jefferson City Gage = 11.53 at time of collection 6 April 2021



LEGEND

	< 8		< 8 ft		Green Passing		Green		AIS Green CAN
	8 - 9		8 - 9 ft		Red Passing		Red		AIS Red NUN
	9 - 9.5		9 - 10 ft		Green Crossing		Green CAN		Red NUN
	9.5 - 10		10 - 12 ft		Red Crossing		Junction		
	10 - 12		River Mile						
	12 - 14		Sailing Line						
	14 - 16		BSNP Structure						
	> 16		Levee						

Buoy

- AIS Green CAN
- AIS Red NUN
- Green CAN
- Red NUN

Scale: 0 312.5 625 937.5 1,250 2,500 Feet

Vertical Datum: Soundings are shown in feet and indicated depths are referenced to water surface at time of collection.

Horizontal Coordinate System: World Geodetic System of 1984 (WGS84), projected to the Universal Transverse Mercator (UTM) Zone 15 North. Distance units in U.S. Survey Feet.



Disclaimer: The U.S. Army Corps of Engineers makes no warranty, express or implied, for the use of the information contained herein for any purpose other than that for which it was prepared. The U.S. Army Corps of Engineers makes no warranty, express or implied, for the use of the information contained herein for any purpose other than that for which it was prepared. The U.S. Army Corps of Engineers makes no warranty, express or implied, for the use of the information contained herein for any purpose other than that for which it was prepared. The U.S. Army Corps of Engineers makes no warranty, express or implied, for the use of the information contained herein for any purpose other than that for which it was prepared.

KANSAS CITY DISTRICT MISSOURI RIVER AREA OFFICE			
Submitted By:	Reviewed By:	Approved By:	Checked By:
MIA/O	MIA/O	MIA/O	MIA/O

Survey Information

MO_02_LMR
MO_02_LMR_20210406_CS_132_0_133_6_SORT
06 April 2021

Sheet Number
16 of 46

NOTES:
Horizontal Coordinate System: World Geodetic System of 1984 (WGS84), projected to the Universal Transverse Mercator (UTM) Zone 15 North. Distance units in U.S. Survey Feet.
Vertical Datum: Soundings are shown in feet and indicated depths are referenced to water surface at time of collection.
The information depicted on this map represents the results of a survey conducted on the date indicated and can only be considered to represent the general condition existing at that time.
The location of navigation aids are based on and provided by the U.S. Coast Guard.